

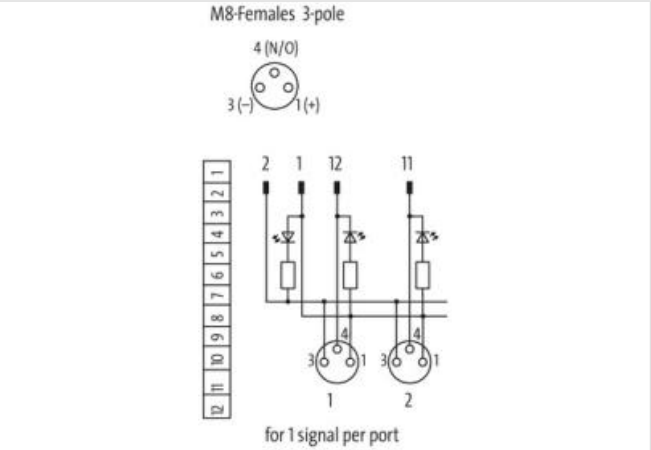
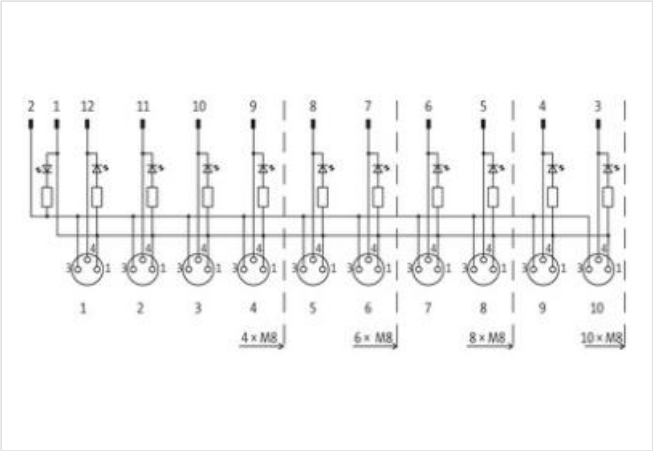
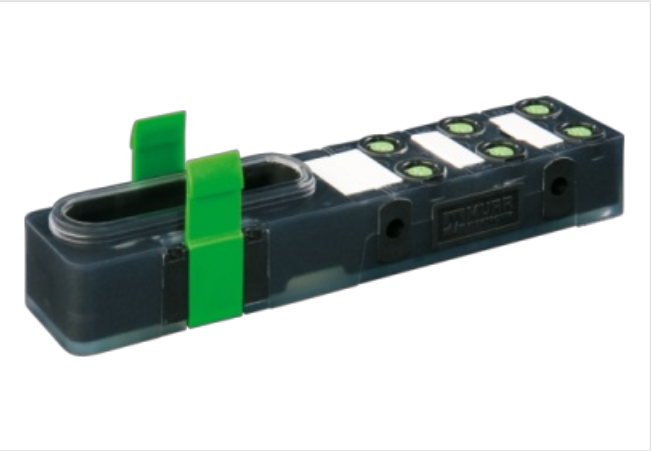
EXACT8, 6XM8, 3 POLE BASIC HOUSING, NPN-LED'S

Without connector cable

6-way, 3-pole  
Inline face or side mounting  
for NPN signals 24 V DC  
Plastic housings with good resistance against chemicals and oils.  
The resistance to aggressive media should be individually tested for your application. Further details on request.

Link to Product

Illustration



Product may differ from Image



| Commercial data |          |
|-----------------|----------|
| ECLASS-6.0      | 27279219 |
| ECLASS-6.1      | 27279219 |
| ECLASS-7.0      | 27279219 |
| ECLASS-8.0      | 27279219 |

|                       |               |
|-----------------------|---------------|
| ECLASS-9.0            | 27440111      |
| ECLASS-10.1           | 27440111      |
| ECLASS-11.1           | 27440111      |
| ECLASS-12.0           | 27440111      |
| ETIM-5.0              | EC002585      |
| customs tariff number | 85369010      |
| GTIN                  | 4048879055307 |
| Packaging unit        | 1             |

**Electrical data | Supply**

|                                    |      |
|------------------------------------|------|
| Operating voltage DC               | 24 V |
| Current operating per contact max. | 2 A  |
| Total current max.                 | 8 A  |

**Device protection | Electrical**

|                                     |            |
|-------------------------------------|------------|
| Degree of protection (EN IEC 60529) | IP65, IP67 |
|-------------------------------------|------------|

**Environmental characteristics | Climatic**

|  |                            |
|--|----------------------------|
| Operating temperature min.             | -20 °C                     |
| Operating temperature max.             | 70 °C                      |
| Additional condition temperature range | depending on cable quality |

**Connection type 2**

|                          |        |
|--------------------------|--------|
| Family construction form | Cap    |
| No. of poles             | 12     |
| Family construction form | M8     |
| Gender                   | female |
| Color contact carrier    | black  |
| Coding                   | A      |
| No. of poles             | 3      |
| PIN 1                    | +      |
| PIN 3                    | -      |
| PIN 4                    | S      |