

## POWER DISTRIBUTOR CUBE 67

4x M12, 6-pole

Power distributor (4x M12)

System accessories

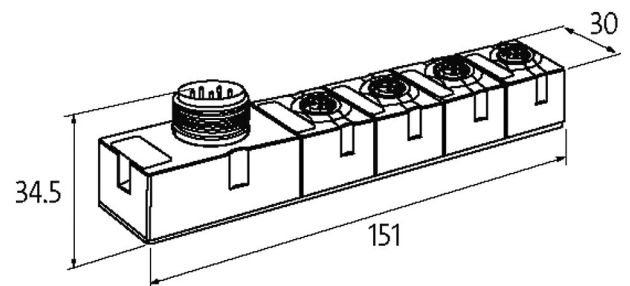
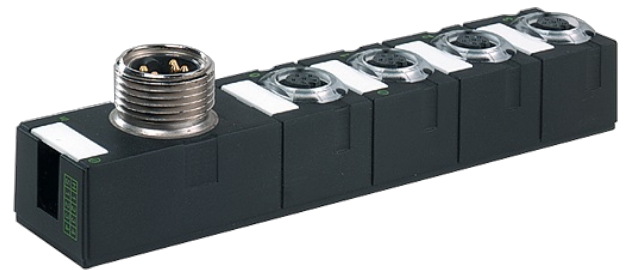
Protection IP67

Connection cables are in the online shop under "Connection Technology".

Housing fully potted.

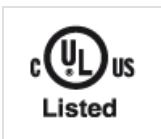
### [Link to Product](#)

#### Illustration



Product may differ from Image

#### Approvals



#### General data

Protection	IP67
Mounting method	2-hole screw mounting
Temperature range	0...+55 °C (storage temperature -20...+75 °C)
Dimensions H×W×D	150×30×34.5 mm

#### Module supply

Operating voltage	24 V DC (EN 61131-2)
-------------------	----------------------

#### Voltage inputs

Input voltage	24 V DC (EN 61131-2)
Connection	7/8" (male), 5-pole
Current load capacity	max. 9 A

#### Voltage output signals

Connection	Female M12, 6-pole
------------	--------------------

Current load capacity	max. 4 A
-----------------------	----------

**Diagnostic**

Monitoring - no voltage	yes
-------------------------	-----

Short-circuit and overload	yes
----------------------------	-----

**Commercial data**

country of origin	DE
-------------------	----

customs tariff number	85389099
-----------------------	----------

EAN	4048879047852
-----	---------------

eClass	27242690
--------	----------

Packaging unit	1
----------------	---